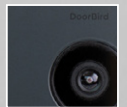
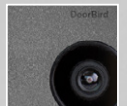
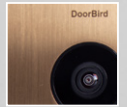




ekey Fingerprint Reader Module not included in delivery.



D2101FV EKEY

IP VIDEO DOOR STATION

For single-family houses and commercial buildings with 1 unit
With cut-out for ekey Fingerprint Reader Module • 1 Call Button

ANSWER YOUR DOOR ANYWHERE.

ADVANTAGES

HOW DOES IT WORK?

Imagine, you are not at home and your children have locked themselves out or the courier wants to deliver a parcel. With DoorBird this is no longer a problem. Every time someone rings the doorbell you will get a push notification on your smartphone or tablet. Via the DoorBird App you are not only able to talk to the visitor but also see them live in HD quality. You will never miss a visitor again. With DoorBird you are on the move and yet at home, even if a burglar rings at the door to check if someone is at home.

SMART HOME STARTS AT THE FRONT DOOR

DoorBird is the smart solution for your house entrance. Simply connect your DoorBird IP Video Door Station to your smartphone and talk to your visitor - anywhere you are. The IP Video Door Station can be used as a stand-alone unit or can be integrated into an existing Smart Home platform. Even existing classic installations such as an electric door opener can still be used and controlled via the DoorBird App.

QUALITY MADE IN GERMANY

All DoorBird products are designed, developed and produced by Bird Home Automation GmbH in Berlin, Germany. We manufacture all products with the greatest care and precision, and deliver them to our customers all over the world.



Open API

- Local interface for integration with third-party systems and SIP



Video und Audioanruf

- Auf Smartphones und Tablets (iOS, Android) oder Festnetztelefonen (SIP)



Smart Transmission Mode (STM)

- Audio- / Videoübertragung in Echtzeit, optimiert für Mobilgeräte über WLAN, 3G, 4G, 5G



Smart Home & NVR compatible

- Control4, Loxone, Crestron, Synology, AVM FRITZ!Fon, URC, QNAP, RTI, ELAN, Fibaro, Bang & Olufsen and others



Mikrofon

- Klare Sprachübertragung



Automatic door buzzer

- For use in medical offices and office environments

HD HDTV Video

- Ultra wide-angle, hemispheric lens, 180°



Motion sensor with 4D technology

- Distance up to 10 m adjustable via App (interval: 1 m)



Free visitor history

- Store still images for free, optional video recording available



Light sensor

- For night vision mode



Call button

- With backlit nameplate



Individual action schedules, e.g.:

- RFID card „abc“ has only access on Wednesday from 9 am until 11 am
- 4D motion sensor switches on external lamp between 9 pm and 6 am



Integrationsoption für ekey Fingerabdruckleser

- Frontblende vorbereitet für ekey Home FS UP I „Black Edition“, nicht im Lieferumfang enthalten



Easy connection to the network

- Connection via a network cable or a bell wire (with a 2-wire converter) to a RJ45 socket (PoE, network data)



Geofencing

- Automatische Tor- und Türöffnung beim Heimkehren



Noise reduction and echo cancellation (AEC, ANR)



Two freely configurable bi-stable switching relays

- Two doors or gates can be controlled via App
- Status configurable via App: temporary or permanent circuit



Nachtsicht

- Mit 12 Infrarot LEDs



RFID reader

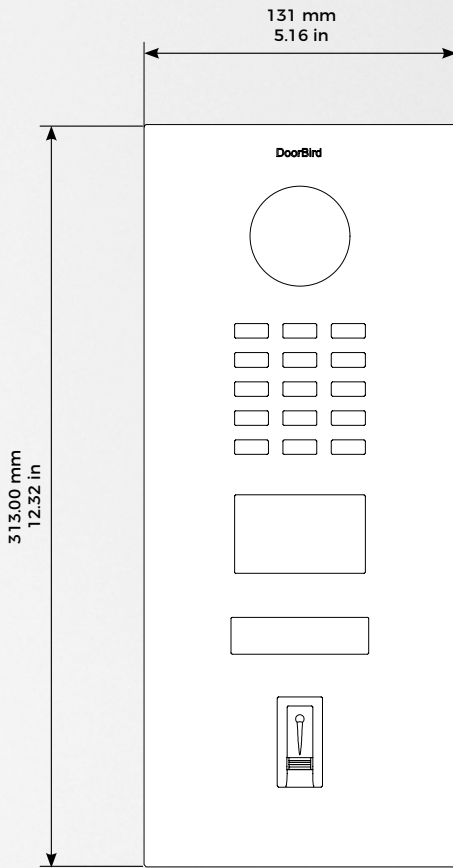
- Configurable remotely via App (e.g. time frame)

GENERAL	
Front panel	3 mm (0.12 in) Available in brushed stainless steel V2A / V4A and V4A with bronze and titanium finish, DB 703, RAL 7016
Mounting housing (backbox)	Stainless steel
Mounting type	Flush-mounted, surface-mounting housing sold separately
Power supply	15 V DC (max. 15 W) or Power over Ethernet (PoE 802.3af Mode-A)
Call button	Plastic. Engravable metal nameplate sold separately, see www.doorbird.com/buy
Nameplate	Illuminated
Supported Fingerprint Reader Module	<ul style="list-style-type: none"> Front panel with cut-out for ekey Home FS OM I "Black Edition", not included in delivery (ekey article number: 102008) includes drillings, milling, bolts, additional seal and mounting material for immediate start
Weight	1858 g
Connectors	<ul style="list-style-type: none"> RJ45, for LAN/PoE Bi-stable latching relay #1, max. 24 V DC/AC, 1 Ampere, e.g. for electric door opener Bi-stable latching relay #2, max. 24 V DC/AC, 1 Ampere, e.g. for electric door opener External input for external door opener button (potential-free) 15 V DC input (+, -), max. 15 W Relays can be expanded / detached with DoorBird I/O Door Controller
Weather-proof	Yes, IP65
Approvals	IP65, CE, FCC, IC, RoHS, IK08, REACH, IEC/EN 62368, IEC/EN 62471
Dimensions	313 x 131 x 48,75 mm (H x W x D) 12,32 x 5,16 x 1,92 in (H x W x D)
Operating conditions	-25 to +55°C / -13 to 131°F Humidity 10 to 85 % RH (non-condensing)
Scope of delivery	1x Main Electrical Unit 1x Front panel 1x Nameplate for 1 call button, stainless steel, bell symbol 1x Nameplate for 1 call button, plastic, transparent 1x Flush-mounting housing (backbox) 1x Power supply unit (mains adaptor) with four country-specific outlet adaptors (110 - 240 V AC to 15 V DC) 1x RFID key fob 1x Screwdriver 1x Quickstart guide with Digital Passport 1x Installation manual 1x Small parts
Warranty	see www.doorbird.com/warranty
DERZEITIGE SYSTEMANFORDERUNGEN	
Systemanforderungen	Mobiles Endgerät: Neuestes iOS auf iPhone/iPad, neuestes Android auf Smartphone/Tablet Internet: High-Speed Festnetz Breitband Internetanschluss, DSL, Kabel oder Glasfaser, kein Socks- oder Proxyserver Netzwerk: Ethernet Netzwerk, mit DHCP Kameralinse sollte sich auf mindestens 145 cm (57 in) befinden. Bitte prüfen Sie vor der Montage die für Sie optimale Installationshöhe.

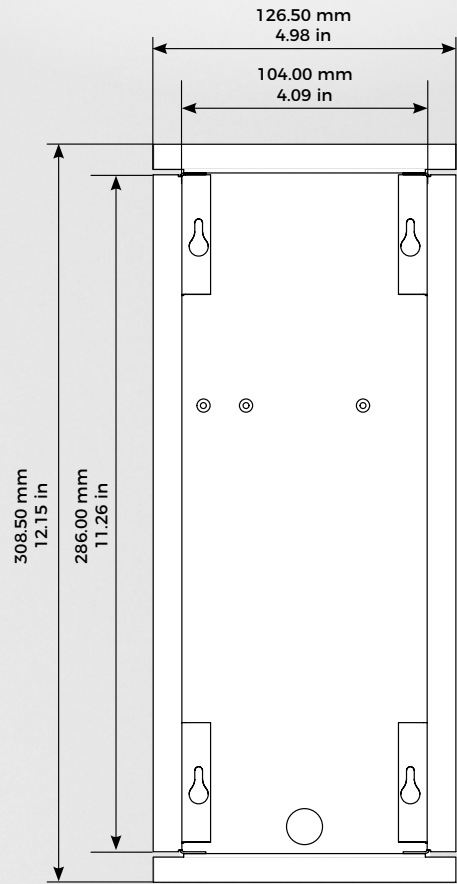
VIDEO	
Camera	HDTV 720p, dynamic (VGA - HDTV)
Lens	High-end ultra wide-angle hemispheric lens 180° (D), 140° (H), 100° (V), straightened, IR-capable
Night-vision	Yes, light sensor, automatic IR-cut filter, 12 Infrared LEDs (850 nm)
AUDIO	
Audio components	Speaker and microphone, noise reduction and echo cancellation (ANR, AEC)
Audio streaming	Two-way, full duplex
NETWORK	
Ethernet	RJ45 jack, PoE 802.3af Mode-A, 10/100 Base-T
Supported protocols	HTTP, HTTPS, SSL/TLS, Bonjour, DNS, RTSP, RTP, TCP, UDP, RTCP, ICMP, DHCP, ARP, SIP, DTMF (RTP [RFC-2833], SIP INFO [RFC-2976]), STM
MOTION SENSOR	
Type	Active
Detection angle	54° (H), 70° (V)
Range	1 - 10 m (3.3 - 32.9 ft), depends on environment, configurable in 1 m (3.3 ft) steps.
Technology	4D. Based on multiple integrated sensors and algorithms, e.g. Radio Frequency Energy (RFE)
Configuration	Via App, e.g. <ul style="list-style-type: none"> Range (1 - 10 m / 3.3 - 32.9 ft) Movement direction (coming, leaving, both) Individual events (e.g. switch a relay, push notification, SIP call [audio/video], HTTP(s) notification) Individual schedules
RFID	
Type	Active Reader Passive Tag (ARPT) system
Standard	ISO/IEC 18000-2:2009 Part 2, EM4100, EM4102
Frequency	125 KHz
Range	0 - 3 cm, depends on environment
Antenna	Internal
Compatible Transponder	RFID key fobs, sold separately, see www.doorbird.com/buy
Configuration	Up to 100 tags manageable Via App, e.g. <ul style="list-style-type: none"> Tag (add, delete) Individual events (e.g. switch a relay, SIP call [audio/video], HTTP(s) notification) Individual schedules
INTEGRATED WIRELESS MODULES	
RFID	125 KHz
Sensor	24 GHz, can be disabled
THIRD-PARTY INTEGRATION (DOORBIRD CONNECT)	
Partnerintegrations	see www.doorbird.com/connect
API	see www.doorbird.com/api
Simultaneous video streams	One, for event-based and continuous recording
OPTIONAL ACCESSORIES	
Sold separately	see www.doorbird.com/buy

Special remarks:
Assembly requires professional skills or a technician.

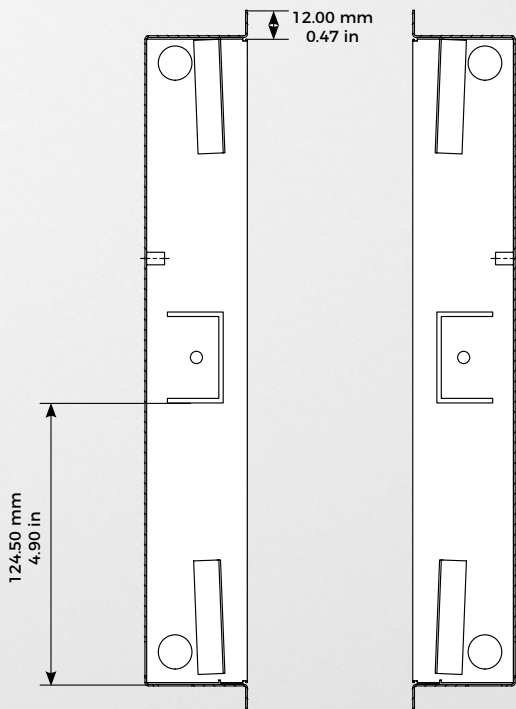
Front panel material thickness: 3.0 mm (0.12 in)



Front panel

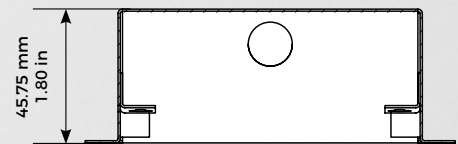


Flush-mounting housing (backbox)



Flush-mounting housing (backbox)

Flush-mounting housing (backbox)



Flush-mounting housing (backbox)